

PRODUCT PORTFOLIO – COOLING AND HEATING IN ONE SYSTEM

The Eberspächer variety of devices and components allows for the configuration of a thermal management system for nearly every type of vehicle.



ROOF-MOUNTED AC SYSTEMS:

When there is sufficient space on top of the cab or passenger compartment, and/or insufficient space for installation in the interior, several components are installed together in a roof-mounted AC system. The simple installation of this type of system, and the resulting space savings in the interior, are major advantages for you. Our extensive product portfolio of powerful rooftop-mounted AC systems extends from 12 V to 24 V, including special applications with 230 V operation.



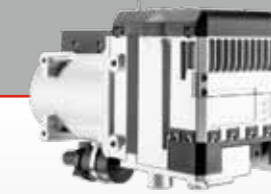
HVAC EVAPORATORS:

Our HVAC units combine the impressive cooling performances of our evaporators with an additional heat exchanger, and supply heat to produce a perfect environment in all weather conditions. Combined with a fuel-powered Hydronic water heater, the HVAC guarantees very high heating performance. Heating and cooling functions can be controlled fully automatically with a digital controller.



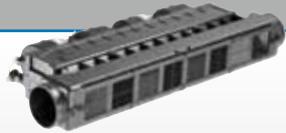
CLIMATE CONTROL UNITS:

Climate control systems are available to combine the air conditioning system with either Hydronic water heaters or Airtronic air heaters, as well as heat exchangers. New features include a high-contrast LED back light, half DIN slot size and soft touch push-buttons. This way, you are guaranteed a constant temperature in the vehicle when you need it – all year round.



HYDRONIC WATER HEATERS:

The advantage of Eberspächer water heaters is that they pre-heat both the vehicle interior and the engine with a heating performance range of 4 to 35 kW. They are usually installed underfloor or in the engine compartment to save space and are integrated into the cooling water circuit. The heat is given off from convectors.



EVAPORATORS:

Our evaporators and HVAC deliver maximum performance with minimal dimensions. Even in the case of direct sunlight or a fully occupied bus, the Eberspächer AC systems guarantee that the ideal temperature will be maintained with cooling performances of 4 to 14 kW.



CONDENSERS:

Our condensers are suitable for installation on the radiator, underfloor or on the roof, and are therefore suitable for a wide range of vehicle applications. Universal fitting and industrial standard installation are provided as a matter of course.



COMPRESSORS:

From a large selection and an output range from 130 to 775 ccm, we select precisely the right compressor for an efficient air-conditioning solution.



AIRTRONIC AIR HEATERS:

Eberspächer air heaters deliver the desired heat very quickly and are very energy efficient and quiet in doing so. Our range of products is appropriately versatile, with fuel-powered air heaters of 2 to 8 kW.



HEAT EXCHANGERS:

Are you already enjoying the comfort of an Eberspächer Hydronic and want to distribute the heat of your water heater more precisely throughout the vehicle? Then, the Eberspächer water/air heat exchangers – with a performance range of 2 to 10 kW – are an ideal supplement to the Eberspächer water heating system. With this solution, the heat reaches even the farthest corners of your vehicle in no time.

