

EN/INSTRUCTION MANUAL

A.D.T. 350  
A.D.T. 452  
A.D.T. 750

## MARKET SEGMENTS



CONSTRUCTION



AGRICULTURE/  
FORESTRY



RV



PUBLIC SAFETY



UTILITY/CARGO



PERSONAL  
TRANSPORT



AMBULANCE

## 1 PRIOR INFORMATION

1.1	Instructions for use	5
1.1.1	Intended Use	5
1.1.2	Unauthorised use	5
1.2	Installation instructions	5
1.3	Legal regulation	5
1.4	Type approval	6
1.5	CE declaration of conformity	6
1.6	UKCA declaration of conformity	6
1.7	Cleaning and maintenance instructions	6
1.8	Note on environmental protection	6
1.9	Technical support	6

## 2 A.D.T 350

2.1	Overview	7
2.2	Technical data	7
2.3	Main Dimensions	8
2.4	Installation	8
2.4.1	Cut off the roof of the vehicle	8
2.4.2	Prepare the surfaces to be sealed	8
2.4.3	Assembly steps	8
2.5	Electrical connection	9
2.5.1	Blower	9
2.5.2	Electrical diagram	9

## 3 A.D.T. 452 / A.D.T. 750

3.1	Overview	10
3.2	Technical data	11
3.3	Main Dimensions	12
3.4	Installation	12
3.4.1	Cut off the roof of the vehicle	12
3.4.2	Prepare the surfaces to be sealed	12
3.4.3	Assembly steps	12
3.5	Electrical connection	13
3.5.1	Blower	13
3.5.2	Electrical diagram	13

## 4 Easy Fit

4.1	Overview	14
4.2	Main Dimensions	15
4.3	Preparation for assembly	15
4.3.1	Adjust the height of the channel <b>ADT</b>	15
4.3.2	Cut off the roof of the vehicle	15
4.3.3	Prepare the surfaces to be sealed	15
4.4	Assembly steps	16
4.4.1	Seal and secure the bracket <b>ADT</b>	16
4.4.2	Seal and secure the channel <b>ADT</b>	16
4.4.3	Seal and secure the fan support	16

## 5 DIFFUSER

5.1	Lateral air diffuser	17
5.2	Diffuser <b>Rondo BR</b>	17
5.3	Diffuser <b>Rondo GR</b>	17

**6 MAINTENANCE**

**7 REPAIR**

**8 CE - DECLARATION OF CONFORMITY & DECLARATION OF INCORPORATION OF A QUASI-MACHINE**

**9 UKCA - DECLARATION OF CONFORMITY & DECLARATION OF INCORPORATION OF A QUASI-MACHINE**

Refer to the safety information sheet supplied with the product, and to the risks and preventive measures indicated in the form of pictograms.

## 1 Prior information

### 1.1 Instructions for use

This document contains information necessary to operate your equipment.  
Please print and keep this documentation in a safe place for future reference.

#### 1.1.1 Intended Use

Eberspächer Kalori equipment is designed to ventilate, heat and/or cool passenger compartments and cabins, or to de-ice the windscreen and windows of the vehicle.

The equipment is intended for professional use in L, M, N, O, T, C, R and S vehicles and in machines such as construction engineering machines, forestry machines, handling machines, tower cranes, mining machines or airport vehicles.

For all other professional uses, the installation must be carried out by a professional installer, who verifies that the equipment corresponds to the application.

#### 1.1.2 Unauthorised use

Modifications to the equipment are strictly prohibited. Any unintended use and any other use of the equipment beyond or different from the intended use is considered to be misuse. The warranty becomes null and void and Eberspächer Kalori is no longer liable.

This product is not intended for domestic use.

Eberspächer Kalori equipment is not intended for the following applications:

- Long-term operation, for example for air conditioning or heating in homes, garages or containers

### 1.2 Installation instructions

Failure to comply with the warnings and safety instructions invalidates the warranty and means that Eberspächer Kalori cannot be held liable.

The equipment must not be installed and used:

- in extremely dusty environments
- in an aggressive environment
- in the event of excessive vibrations of the machine or the vehicle
- in a way that does not comply with the regulations in force
- without full or partial compliance with the operating or assembly instructions

- without maintenance and/or use of original spare parts
- in such a way as to damage its environment
- so as not to be damaged by the environment.

The equipment should only be installed in the position indicated in the instruction manual.

The installation of this equipment in the vehicle or machine must ensure that it is protected against reasonably foreseeable impacts (e.g. kicking, etc.).

The installation, use and maintenance of the equipment must comply with the regulations in force in the country of use.

This equipment cannot be operated alone and must be supplemented by other components such as a diffuser, a control panel.

The equipment should be stored in a dry place.

Electrical parts that are not sealed must be protected against water and dust.

Ensure that all electrical components involved in the installation of the equipment are correctly sized.

Complete the electrical connections necessary for the wiring of the equipment, carefully following the instructions in the manual. Provide electrical protection upstream of the equipment.

Electrical protections (disconnecting device, fuses) are not supplied with the equipment.

Power cables upstream of the equipment should be clamped.

#### For wall vents > 60VDC:

Dual voltage equipment must be powered by 2 different power sources. The 12Vdc and 24Vdc products must be powered by batteries.

Equipotential bonding cables with a cross-section of less than 4 mm<sup>2</sup> must be mechanically protected during product integration.

### 1.3 Legal regulation

Legal regulations are mandatory and must also be complied with in countries where there are no special regulations.

The manufacturer follows a policy of continuous development and, in this respect, reserves the right to make changes and improvements to the documentation and equipment without prior notice.

Compliance with legal provisions and all instructions and instructions contained in this document, as well as with the safety information supplied with the product, is a prerequisite to any warranty and liability claim.

Repairs by unauthorized third parties and/or with non-original

spare parts are not permitted. This will result in the expiration of the equipment approval and may result in the expiration of the vehicle or machine operating license.

#### 1.4 Type approval

For some components, the Centre National de Réception des Véhicules (National Vehicle Approval Centre) has issued a type approval according to ECE-R10 for installation in motor vehicles, with an official type approval marking noted on the component's nameplate. Eberspaecher Kalori products may only be used in vehicles that are fully approved by the customer.

#### 1.5 CE declaration of conformity

We hereby declare that the version of the product we are placing on the market complies with the applicable provisions of the following European directives:

- CEM Directive 2014/30/EU



- Machinery Directive 2006/42/CE

#### 1.6 UKCA declaration of conformity

We hereby declare that the version of the product we are placing on the market complies with the applicable provisions of the following UKCA directives:

- The Electromagnetic Compatibility Regulations 2016
- The Supply of Machinery (Safety) Regulations 2008



#### 1.7 Cleaning and maintenance instructions

Wash with a damp cloth.

#### 1.8 Note on environmental protection



WEEE Directive 2012/19/EU

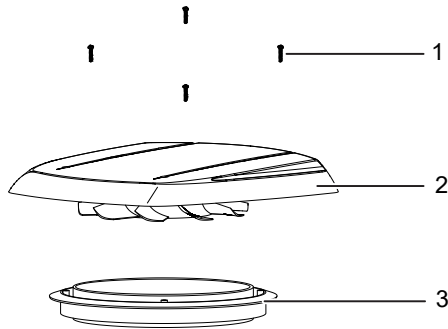
Electrical and electronic devices should not be disposed of with household waste. Consumers are required by law to return electrical and electronic equipment at the end of its life to the public collection points provided for this purpose or to the point of sale. The details of this obligation are defined by the national legislation of the country concerned. The symbol on the product, the instruction manual or the packaging indicates that a product is subject to these regulations.

#### 1.9 Technical support

If you have any technical questions or problems with the equipment, please contact your dealer.

## 2 A.D.T 350

### 2.1 Overview



No	Description
1	x4 bolts
2	Headset
3	Bracket

### 2.2 Technical data

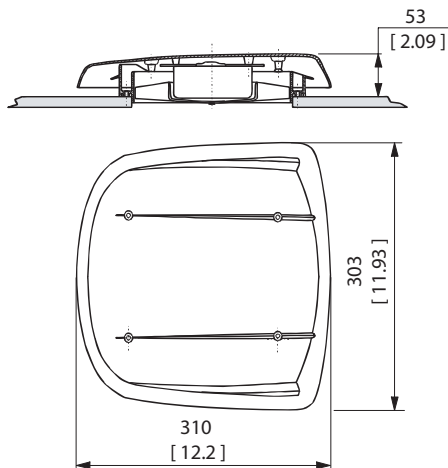
MODEL	ADT 350		
Part number	8300 12140406	8300 12140405	8300 12140410
Rated voltage (+/-10%)	12V		24V
Air flow	629m <sup>3</sup> /hr - 356 CFM	315m <sup>3</sup> /hr - 178 CFM	629m <sup>3</sup> /hr - 356 CFM
Max. Fan consumption <sup>(1)</sup>	72W	37W	73W
Operating temperature range	-20 / +40°C [ -4 / +104°F ]		
Storage temperature range	-30 / +70°C [ -22 / +158°F ]		
Fuse <sup>(2)</sup>	10A	5A	5A
Weight	1.5 kg - 3.3 lbs		

(1) Inrush current can vary from 1 to 10 times the rated current of the product depending on integration and operating conditions. To be checked on the vehicle.

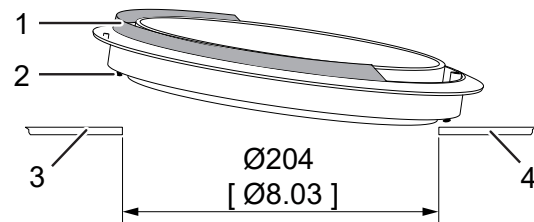
(2) Must be checked following vehicle installation.

Use of the equipment outside the specified technical data may result in malfunctions.  
The technical data must be observed at all times.

### 2.3 Main Dimensions



the front of the vehicle (3).

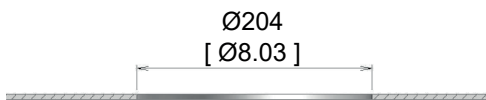


No	Description
1	Deflector
2	Putty
3	Front of vehicle
4	Rear of vehicle

### 2.4 Installation

Installation equipment is not included in the scope of supply.  
Mounting accessories can be ordered separately.  
Provide sufficient intake area so as not to impair the equipment's airflow.

#### 2.4.1 Cut off the roof of the vehicle

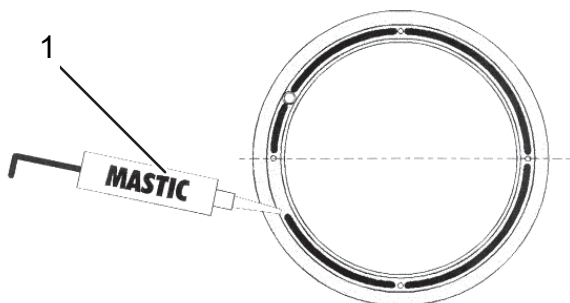


#### 2.4.2 Prepare the surfaces to be sealed

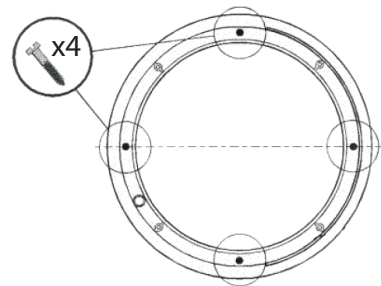
- Clean the surfaces to be sealed.
- Use cleaning and bonding agents compatible with ASA plastic.

#### 2.4.3 Assembly steps

- 1) seal and secure the fan support.  
→ Apply a gasket (1).

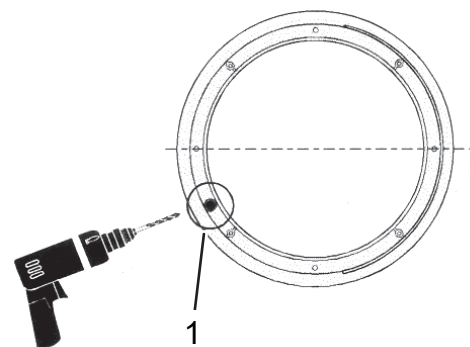


- Secure the bracket to the roof from the outside of the vehicle with 4 screws (not supplied). The screw holes in the support have a diameter of:
  - Ø 3,4 [ Ø 0.13 ]



#### 2) Feed wire

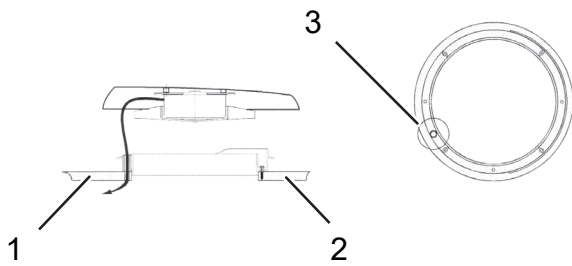
- Drill the vehicle roof using an Ø8 mm forest using the existing hole (1) on the support.



- Position the bracket (2) in the Ø204 hole, deflector (1) toward



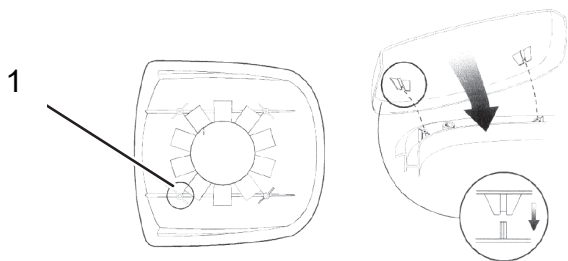
→ Route the fan supply wire through the existing hole (3) in the bracket and through the hole previously drilled in the roof.



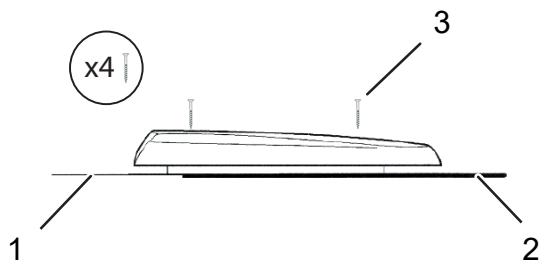
No	Description
1	Rear of vehicle
2	Front of vehicle
3	Feed wire routing

3) Attach the helmet.

→ Position the helmet on the mounting bosses using the 4 centering vanes (1).



→ Secure the helmet to the bracket using the 4 supplied screws (3).



No	Description
1	Rear of vehicle
2	Front of vehicle
3	Screws

## 2.5 Electrical connection

### 2.5.1 Blower

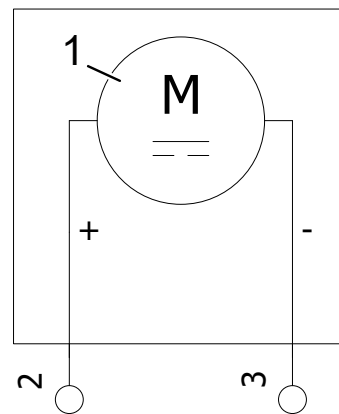
The equipment is supplied with bare wires.

Before installation, an electrical connector must be installed on the equipment.

Meaning of wire color:

- Blue wire: +12V or +24V.
- Black wire: Ground.

### 2.5.2 Electrical diagram

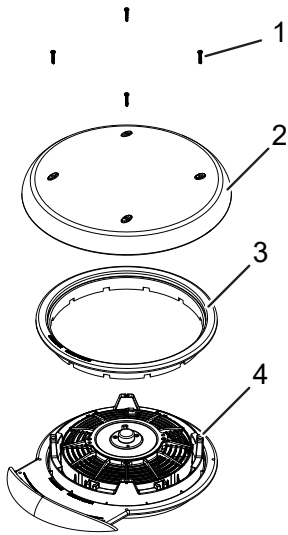


No	Description
1	Fan
2	Blue wire / 12V or 24V
3	Black wire / ground

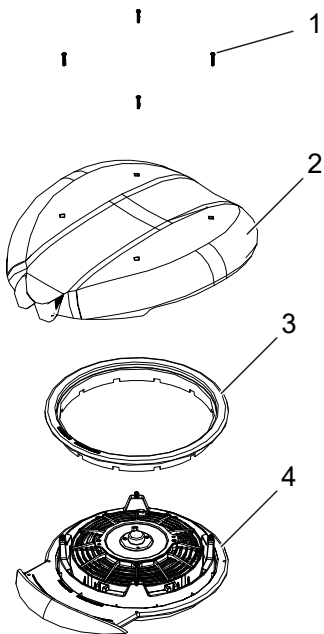
### 3 A.D.T. 452 / A.D.T. 750

#### 3.1 Overview

A.D.T. 452



A.D.T. 750



No	Description
1	Screws
2	Headset
3	Packaging
4	Bracket

### 3.2 Technical data

#### MODEL

#### A.D.T. 452

Part number	8300 12140456	8300 12140415	8300 12140416	8300 12140458
Rated voltage (+/-10%)	12V		24V	
Air flow	629 m <sup>3</sup> /h – 356 CFM			
Max. Fan consumption <sup>(1)</sup>	72W		73W	
Operating temperature range	-20 / +40°C [ -4 / +104°F ]			
Storage temperature range	-30 / +70°C [ -22 / +158°F ]			
Fuse <sup>(2)</sup>	10A		5A	
Weight	1.8 kg - 4 lb			

#### MODEL

#### A.D.T. 750

Part number	8300 12140000	8300 12140100
Rated voltage (+/-10%)	12V	24V
Air flow	629 m <sup>3</sup> /h – 356 CFM	
Max. Fan consumption <sup>(1)</sup>	72W	73W
Operating temperature range	-20 / +40°C [ -4 / +104°F ]	
Storage temperature range	-30 / +70°C [ -22 / +158°F ]	
Fuse <sup>(2)</sup>	10A	5A
Weight	2 kg - 4.4 lb	

(1) Inrush current can vary from 1 to 10 times the rated current of the product depending on integration and operating conditions. To be checked on the vehicle.

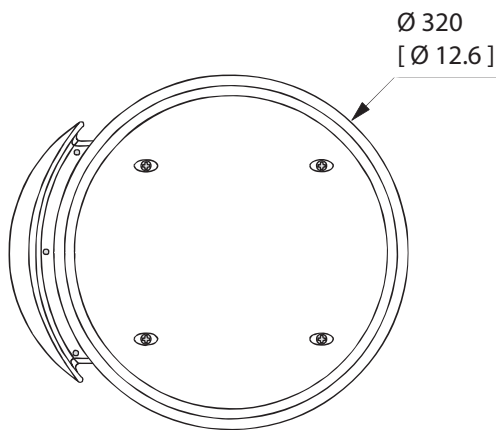
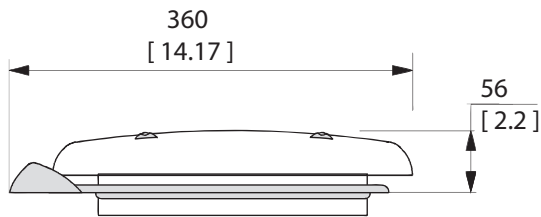
(2) Must be checked following vehicle installation.

Use of the equipment outside the specified technical data may result in malfunctions.

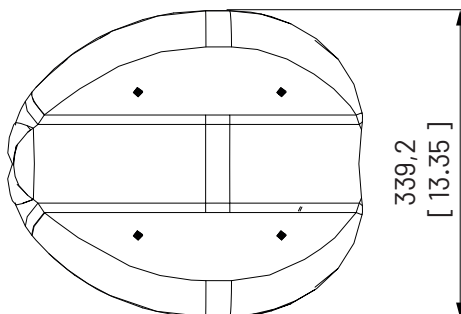
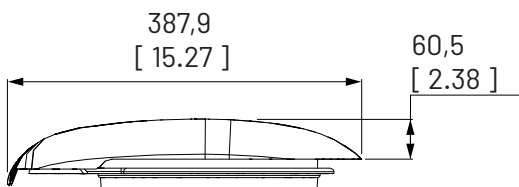
The technical data must be observed at all times.

### 3.3 Main Dimensions

A.D.T. 452



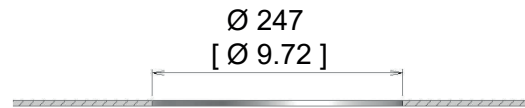
A.D.T. 750



### 3.4 Installation

Installation equipment is not included in the scope of supply. Mounting accessories can be ordered separately. Provide sufficient intake area so as not to impair the equipment's airflow.

#### 3.4.1 Cut off the roof of the vehicle

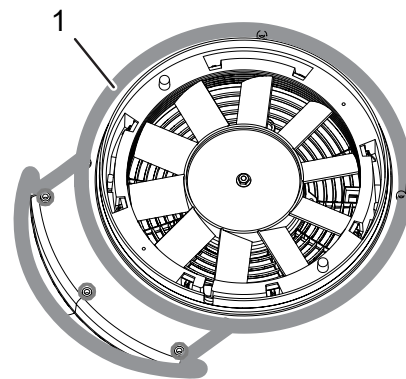


#### 3.4.2 Prepare the surfaces to be sealed

- Clean the surfaces to be sealed.
- Use cleaning and bonding agents compatible with ABS plastic.

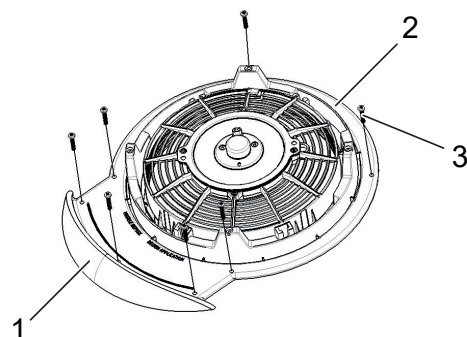
#### 3.4.3 Assembly steps

- 1) seal and secure the fan support.
  - Apply a gasket (1).



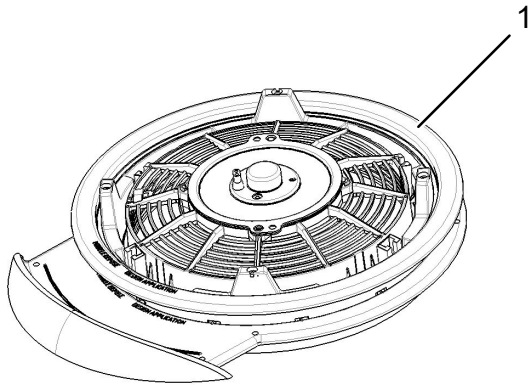
- Mount the bracket with 7 screws (not supplied). The screw holes in the support have a diameter of:
  - Ø 4,2 [0.16].

Deflector (1) facing the front of the vehicle.



No	Description
1	Front of vehicle
2	Rear of vehicle
3	Screws

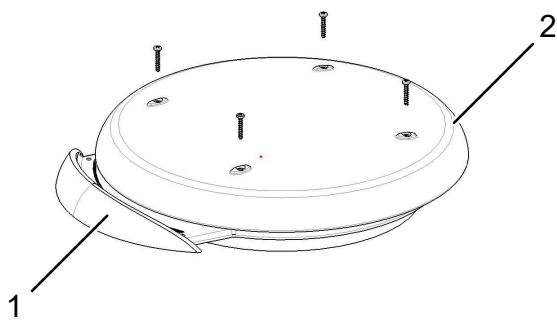
2) Position the ring gear.



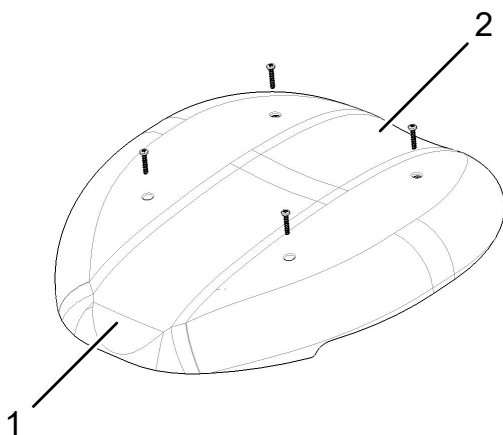
The ring gear (1) will be locked when the helmet is attached.

3) Secure the helmet with 4 screws supplied.

A.D.T. 452 :



A.D.T. 750 :



No	Description
1	Rear of vehicle
2	Front of vehicle

### 3.5 Electrical connection

#### 3.5.1 Blower

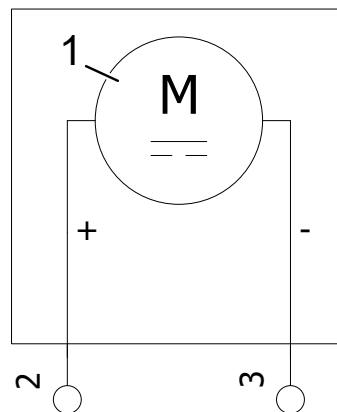
The equipment is supplied with bare wires.

Before installation, an electrical connector must be installed on the equipment.

Meaning of wire color:

- Blue wire: +12V or +24V.
- Black wire: Ground.

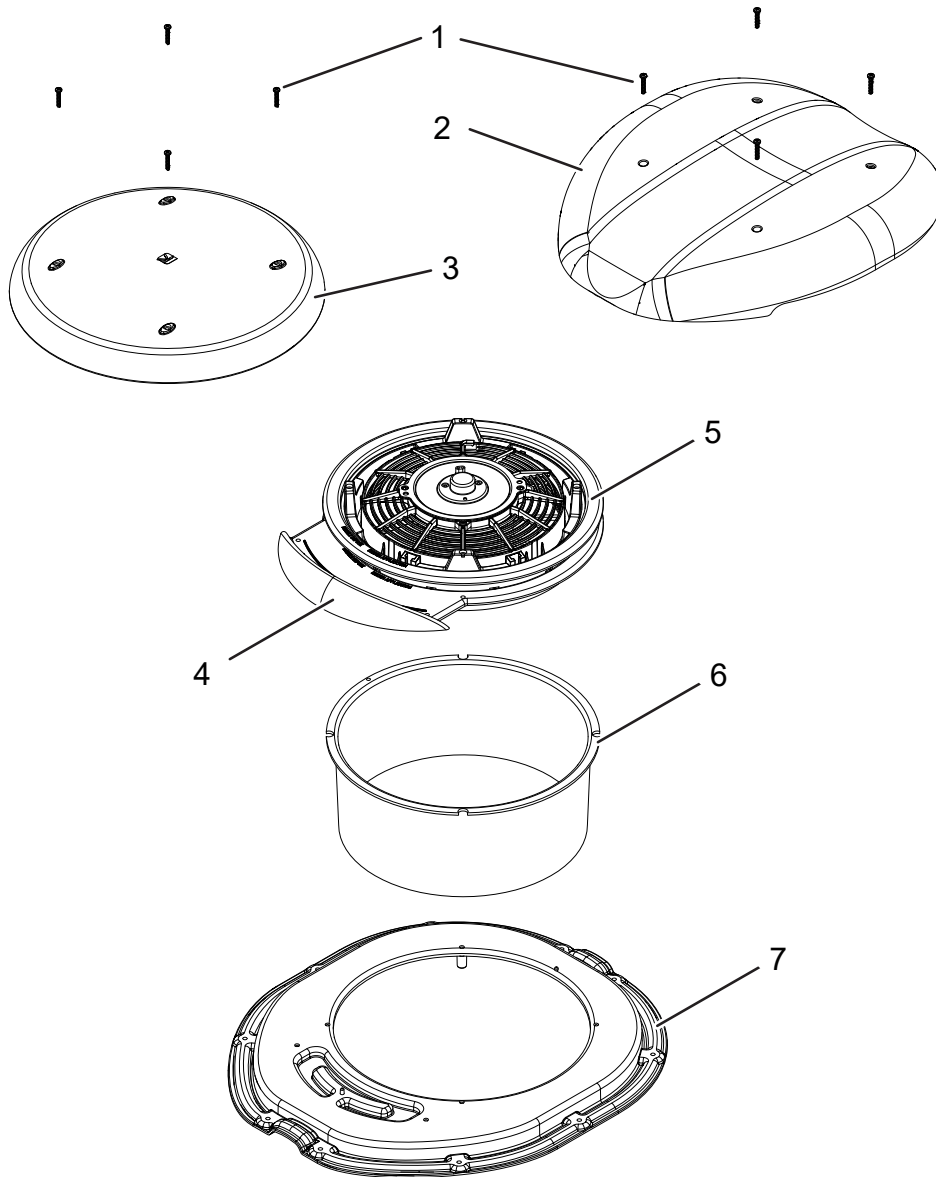
#### 3.5.2 Electrical diagram



No	Description
1	Fan
2	Blue wire / 12V or 24V
3	Black wire / ground

## 4 Easy Fit

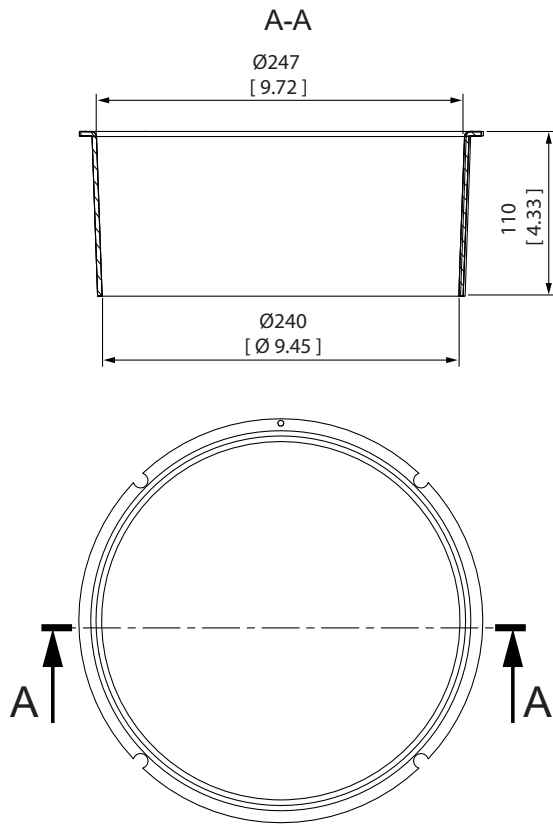
### 4.1 Overview



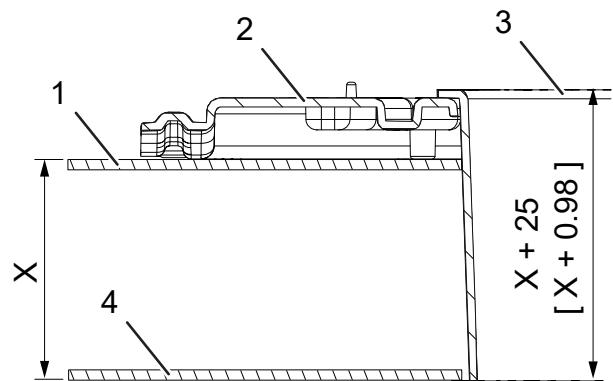
No	Description	Part number
1	Screws	
2	Headset A.D.T. 750	
3	Headset A.D.T. 452	
4	A.D.T. support	
5	Crown A.D.T	
6	A.D.T channel	8300 34017042
7	A.D.T. socket	For Sprinter: 8300 34017041 For Master: 8300 34017079 For Ducato / Boxer / Jumper: 8300 34017130

4.2 Main Dimensions

Channel A.D.T.

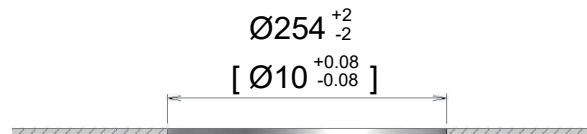


With base A.D.T.



No	Description
1	Roof
2	Mounting plate
3	Channel
4	Interior trim

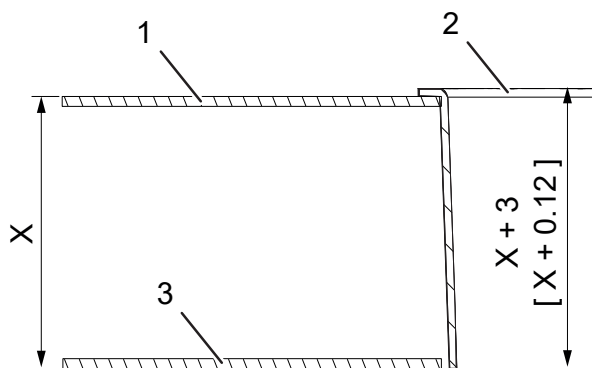
4.3.2 Cut off the roof of the vehicle



4.3 Preparation for assembly

4.3.1 Adjust the height of the channel ADT

Without flange A.D.T.



No	Description
1	Roof
2	Channel
3	Interior trim

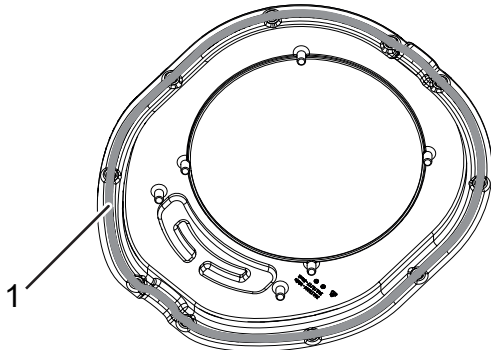
4.3.3 Prepare the surfaces to be sealed

- Clean the surfaces to be sealed.
- Use cleaning and bonding agents compatible with ABS plastic.

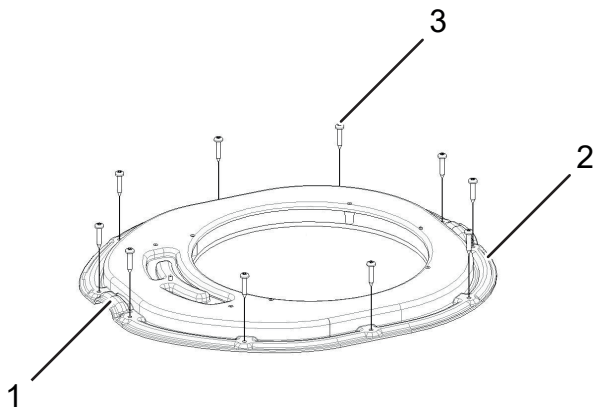
#### 4.4 Assembly steps

##### 4.4.1 Seal and secure the bracket ADT

→ Apply a gasket (1).



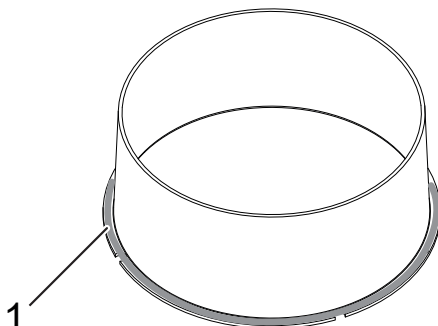
→ Screw on the base (screws (3) not supplied). The screw holes in the support have a diameter of:  
- Ø 4,4 [ Ø 0.17 ].



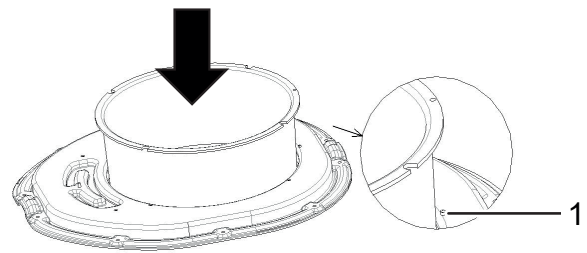
No	Description
1	Rear of vehicle
2	Front of vehicle
3	Sprinter: 10 screws. Master: 8 screws. Ducato / Boxer / Jumper: 8 screws.

##### 4.4.2 Seal and secure the channel ADT

→ Apply sealing mastic (1).



Position the channel A.D.T.

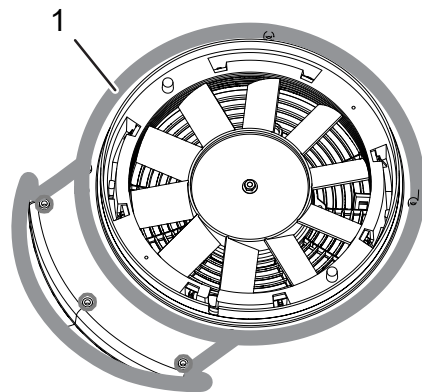


No	Description
1	Locating pin

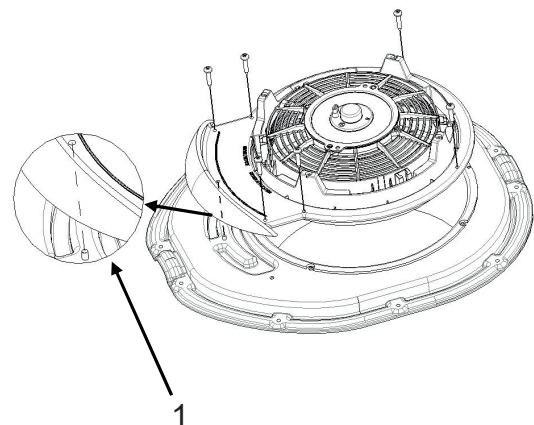
The ADT channel will be blocked after the fan bracket is attached.

##### 4.4.3 Seal and secure the fan support

→ Apply a gasket (1).



→ Mount the bracket with 7 screws (not supplied). Deflector (1) facing the front of the vehicle.

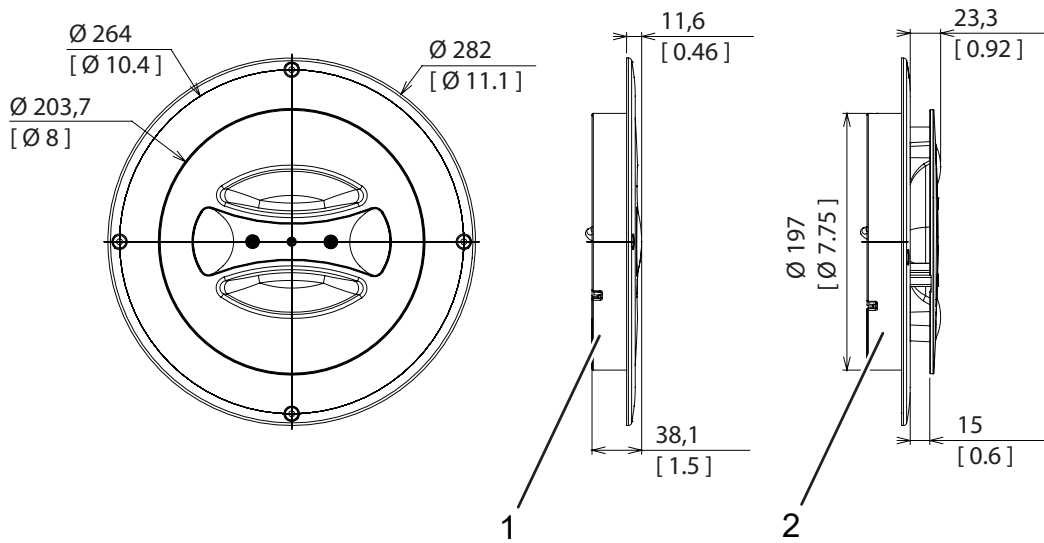


No	Description
1	Locating pin



## 5 Diffuser

### 5.1 Lateral air diffuser

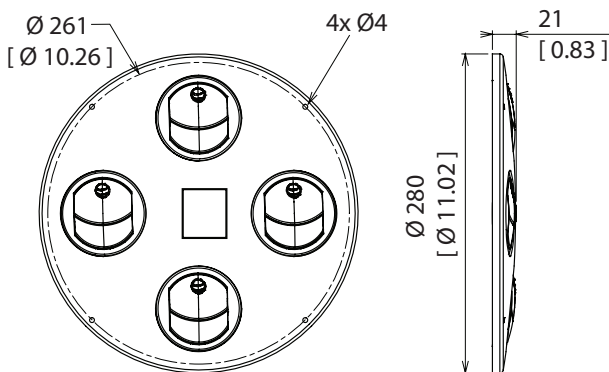


No	Description
1	Closed
2	Opened

Part number

Single 8300 34003115  
 With 12 V illumination: 8300 34003116  
 With 24 V illumination: 8300 34003120

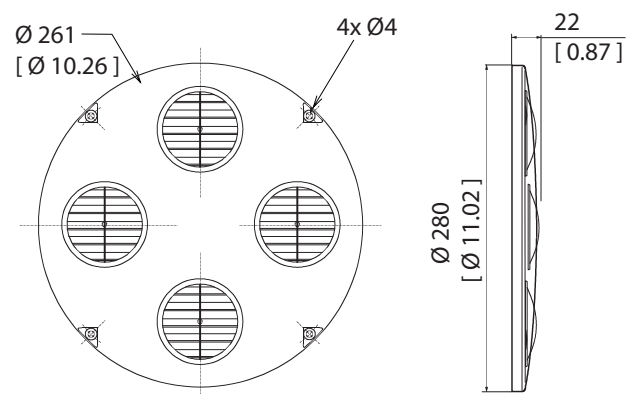
### 5.2 Diffuser Rondo BR



Part number

BR Black: 8300 34003021  
 BR White: 8300 34003031  
 BR Grey: 8300 34003036

### 5.3 Diffuser Rondo GR



Part number

GR Black: 8300 34003020  
 GR White: 8300 34003030  
 GR Grey: 8300 34003035

## 6 Maintenance

The following maintenance checklist should be carried out by qualified personnel. The frequencies indicated are indicative and must be adapted according to the environment.

Contact your dealer in case of a failure detected during maintenance.

Every six months

	ADT
Check that the fan(s) is (are) still able to operate.	●
Check the tightness of the various screws and fittings.	●
Check for corrosion of metal parts, housings, screws and inserts. Change these parts if necessary.	●
Check the integrity/tightness of all electrical parts: power cables, ground cable, grommets, connectors, lugs, fan, motor resistor, protective equipment such as fan thermal fuses, etc. (non-exhaustive list).	●

## 7 Repair

Malfunction	Possible cause	Solution	ADT
Poor ventilation	Blowing out clogged air	Check air diffusion for dirt and clean if necessary	●
	Fan off	Check the electrical connections and replace if necessary	●
		Check the fuse and replace if necessary	●
	End of life of the fan	Contact your dealer, see the spare parts list for the part number to order	●
	Faulty instrumentation and control	Check the instrumentation and control and replace if necessary	●
Abnormal noise and/or vibration	Faulty power supply	Check the fuse and replace if necessary	●
		Turn off the equipment and contact your dealer	●

## 8 CE - Declaration of conformity & Declaration of incorporation of a quasi-machine



Pusignan, 28/11/22

PART NUMBER 8300 40130001 OD / EN / 11.2022

### CE - Declaration of conformity & Declaration of incorporation of a quasi-machine

The products of the family A.D.T. 350 / A.D.T. 452 / A.D.T. 750

- **Comply with EMC Directive 2014/30/UE :**  
ISO 13766, EN 50498, EN 13309, EN 14982

The products are delivered with A CE marking for this purpose.

- **Comply with the Machinery Directive 2006/42/CE Annex I paragraphs 1.1.5, 1.3.1, 1.3.2, 1.3.4, 1.5.10, 1.5.11, 1.7:**
  - EN 60204-1 Septembre 2018 paragraphs 4.1, 4.2.1, 4.3, 4.4.1, 4.4.2, 4.4.3, 4.4.4, 4.4.5, 4.5, 4.6, 6.1, 6.2, 6.3, 7.1, 7.2.1, 7.2.3, 7.2.4, 7.2.8, 7.3.1, 7.4, 7.5, 7.6, 7.7, 8.1, 8.2, 12.1, 12.2, 12.3, 12.4, 12.6, 13.1.3, 13.2.1, 13.2.2, 13.2.3, 13.5.1, 14.1, 14.2, 14.3, 16, 17, 18

Such equipment is partly completed machinery and must not be put into service until the final machinery in which it is to be incorporated has been declared to comply with the relevant provisions of the Machinery Directive 2006/42/CE

Eberspaecher Kalori undertakes, following a duly substantiated request from the national authorities, to transmit the relevant information concerning such partly completed machinery.

**Technical Manager:** Stéphanie LE FAUCHEUR - Engineering manager

BONTEMPS Olivier  
General Manager

Eberspächer Kalori  
ZI de Mariage - Voie E  
69330 Pusignan  
Phone +33 4 72931010  
Fax +33 4 72931019  
www.eberspaecher-kalori.com

Eberspächer Kalori S.A.S. au capital de 350 015€  
SIRET 443 021 522 00018  
APE 2932Z No intracommunautaire FR66 443 021 522  
RCS LYON 443 021 522

## 9 UKCA - Declaration of conformity & Declaration of incorporation of a quasi-machine



Pusignan, 28/11/22

PART NUMBER 8300 40135007 OC / EN / 11.2022

### UKCA - Declaration of conformity & Declaration of incorporation of a quasi-machine

The products of the family A.D.T. 350 / A.D.T. 452 / A.D.T. 750

- **are compliant with the directive** "Electromagnetic Compatibility Regulations 2016" : ISO 13766, EN 50498, EN 13309, EN 14982

The products are delivered with A UKCA marking for this purpose.

- **Comply with Annex I, paragraphs 1.1.5, 1.3.1, 1.3.2, 1.3.4, 1.5.10 , 1.5.11, 1.7 of the directive machine** "Supply of Machinery (Safety) Regulations 2008" :
  - EN 60204-1 Septembre 2018 paragraphs 4.1, 4.2.1, 4.3, 4.4.1, 4.4.2, 4.4.3, 4.4.4, 4.4.5, 4.5, 4.6, 6.1, 6.2, 6.3, 7.1, 7.2.1, 7.2.3, 7.2.4, 7.2.8, 7.3.1, 7.4, 7.5, 7.6, 7.7, 8.1, 8.2, 12.1, 12.2, 12.3, 12.4, 12.6, 13.1.3, 13.2.1, 13.2.2, 13.2.3, 13.5.1, 14.1, 14.2, 14.3, 16, 17, 18

Such equipment is partly completed machinery and must not be put into service until the final machinery in which it is to be incorporated has been declared to comply with the relevant provisions of the Machinery Directive "Supply of Machinery (Safety) Regulations 2008"

Eberspaecher Kalori undertakes, following a duly substantiated request from the national authorities, to transmit the relevant information concerning such partly completed machinery.

**Technical Manager:** Stéphanie LE FAUCHEUR - Engineering manager

BONTEMPS Olivier  
General Manager

Eberspächer Kalori  
ZI de Mariage - Voie E  
69330 Pusignan  
Phone +33 4 72931010  
Fax +33 4 72931019  
www.eberspaecher-kalori.com

Eberspächer Kalori S.A.S. au capital de 350 015€  
SIRET 443 021 522 00018  
APE 2932Z No intracommunautaire FR66 443 021 522  
RCS LYON 443 021 522

